



**ZIAUDDIN UNIVERSITY**  
EXAMINATION BOARD

**Higher Secondary School  
Certificate (HSC)**

**Examination syllabus  
&  
Model Paper**

**Biology  
XI**

**Based on Provincial revised curriculum (Sindh)**

**Prepared by: Ms. Saima Pervaiz Ahmed**

<b>S.No.</b>	<b>Table of Contents</b>	<b>Page No.</b>
1	Preface	<b>03</b>
2	Rationale for the reviewed Provincial Curriculum	<b>04</b>
3	Aims and Objectives of the subject of specific syllabus	<b>5- 6</b>
4	Topics and Student Learning Outcomes of the Examination Syllabus Teaching-Learning Approaches and Classroom Activities Resource Material and e resources website Website: <a href="http://www.zueb.edu.pk">www.zueb.edu.pk</a>	<b>7 -13</b>
5	Table of specification & Scheme of Assessment	<b>14-15</b>
6	Definition of Cognitive Levels and Command Words in the Student Learning Outcomes in Examination Papers	<b>16 - 20</b>
7	Model Paper Biology XI	<b>21-24</b>
8	HSC Scheme of Studies	<b>25-26</b>

**You can Approach us:**

Address: Ziauddin University Examination Board  
D / 20 Block 1 Clifton Karachi  
Phone: 92 21 35148594  
E-mail: [info@zueb.edu.pk](mailto:info@zueb.edu.pk)  
Website: [www.zueb.edu.pk](http://www.zueb.edu.pk)

## PREFACE

Ziauddin University Examination Board (ZUEB) was established by the Sindh ACT XLI 2018, with the aim of improving the quality of education. The Board administers examinations for the Secondary School Certificate (SSC) and Higher Secondary School Certificate (HSSC) based on the latest Reviewed National Curriculum by Directorate Curriculum Assessment and Research (DCAR) Sindh. ZUEB has a mandate by Ordinance to offer such examination services to English /Urdu and Sindhi medium candidates for SSC and HSSC from private schools in Sindh. This examination syllabus exemplifies ZUEB's commitment to provincial educational goals

The Examination Board has prepared with the help of subject professors, subject wise syllabus. It is important to make the difference between syllabus and curriculum. The syllabus of a subject is considered as a guide for the subject teacher as well as the students. It helps the students understand the subject in detail. It also helps students to anticipate what is expected from them while preparing for the exams.

This examination syllabus brings together all those cognitive outcomes of the Provincial Curriculum statement which can be reliably and validly assessed. While the focus is on the cognitive domain, particular emphasis is given to the application of knowledge and understanding.

The examination syllabus is uploaded on the ZUEB website. This is done to help affiliated schools in planning their teaching. It is the syllabus, not the prescribed textbook which is the basis of the ZUEB examinations. In addition, the ZUEB examination syllabus is used to develop learning support materials for students and teachers. The examination board stand committed to all students who have embarked upon the SSC, and HSSC courses in facilitating their learning outcomes. Our examination syllabus document ensures all possible support.

On the Ziauddin University Examination Board website a tab e –resource is made available which provides resource material in all subjects both in text form in line with the curriculum and also videos on topics to give students access to learn at their own pace and own time. These 15 to 20 minutes videos are prepared around subject concept / topics. These videos are available to the students for revisiting a lesson taught by their teacher or watch it prior to the lesson and as a reinforcement strategy. The work on videos is in progress and new titles will be uploaded.

*Please look out for the videos on the given website*



Humbly Yours;

**Shahbaz Nasim**  
**Academic Head**

## Rationale For The Reviewed Provincial Curriculum

The process of revising the National Curriculum 2006 was initiated in August 2004 when newly elected government of Pakistan decided to introduce education reform in the country. The education reform process included the announcement of new National Education Policy. National Education Census and changing the curricula (Ministry of Education, 2009)

In reality, change in secondary school curriculum was initiated in 2006 and as result, scheme of studies for classes I to XII was reviewed and curriculum of 25 compulsory subjects.

The 18th Amendment to the constitution of Pakistan has reconfigured the federal and provincial relationship by abolishing the “concurrent legislative list”. The Act (2010) provides the provinces with strong legislative and financial autonomy in education, health, and other social sectors. Major implication of the 18th Amendment for education is that the curriculum, syllabus, planning, policy, centres of excellence and standards of education will fall under the purview of the provinces. This was a big step forward for education.

In Sindh the Curriculum review team was assigned a task by the School Education Department, Government of Sindh to review the National Curriculum 2006 for all subjects and prepare a revised version that best suits the needs of the students teachers and meets the spirit of the 18<sup>th</sup> amendment.

Subject wise curriculum review committees were formed. Curriculum review team critically examined the contextual and textual parts and aligned the different sections horizontally and vertically of the Curriculum. The Bureau of Curriculum (BOC) played vital role in organizing the workshops and meetings at Hyderabad for the completion of task. The positive support from a number of educationists, researchers and teachers helped in completing the mammoth task of curriculum revision.

On the DCAR website [http://dcar.gos.pk/BoC\\_Other\\_Pages/curriculum\\_dev.html](http://dcar.gos.pk/BoC_Other_Pages/curriculum_dev.html) the national curriculum as well as the revised curriculums are all placed for easy reference.

The Ziauddin University Examination Board Examination syllabi for SSC and HSSC are prepared with the Sindh Revised curriculum. Up till now following subject text books have been developed as per the revised curriculum.

## **AIMS AND OBJECTIVES:**

### **AIMS:**

- The curriculum of Biology at grade XI-XII aims to help individual students develop:
- A scientific understanding of the living world
- Mental and motor abilities appropriate to the acquisition and use of biological Understanding
- An appreciation of the products and influences of science and technology, balanced by a concern for their wise application
- An understanding of the nature and limitations of scientific activity
- An ability to apply biological understanding to appropriate problems (including those of everyday life) and to approach those problems in rational ways
- Respect for evidence, rationality and intellectual honesty
- Capacities to express themselves coherently and logically, both orally and in writing, and to use appropriately modes of communication characteristic of Scientific work
- An ability to work effectively with others.

### **OBJECTIVES:**

- A statement of objectives relevant to each of the general aims is listed below. The sequence of Objectives used here should not be taken as indicating relative weightings.

#### **Understanding the Living World:**

- Students should understand the scientific concepts inherent in the theme for each chapter to be covered well enough to be able to:
- state, exemplify and interpret the concept
- use appropriately, fundamental terms and classifications related to the concept cite, and explain or interpret, scientific evidence in support of the concept.

#### **Appropriate Mental and Motor Abilities:**

Students should show some ability to:

- formulate questions that can be investigated by gathering first or second-hand data
- find relevant published background information
- formulate hypotheses and make predictions from them
- plan an investigation and carry out the planned procedures
- use the motor skills required to carry out investigations
- observe phenomena, and describe, measure and record these as data
- classify, collate and display data
- Interpret and construct visual representations of phenomena and relationships (diagrams, Graphs, flow charts, physical models etc.)
- Analyze data and draw conclusions
- Evaluate investigative procedures and the conclusions drawn from investigations.

#### **Understanding the Nature and Limitations of Scientific Activity:**

For each of the facets of scientific activity selected for study, students should:

- Describe and exemplify it

- Use appropriately any fundamental terms and classifications related to it.
- Recognize that the problem-solving nature of science has limitations
- Acknowledge that people engaged in science, a particularly human enterprise, have the
- Characteristics of people in general.

**Appreciation of the Influences of Science and Technology:**

Students should:

- Recognize that the technology resulting from scientific activity influences the quality of Lifestyle and economic development through or by improvements in medical/health care,
- Nutrition, agricultural techniques
- understand that these influences may be the result of unforeseen consequences, rapid Exploitation or rapid cultural change.

Realize that advances in technology require judicious application.

**Ability to apply Understanding to Problems:**

Students should:

- Recognize that biological knowledge and scientific approaches have relevance to many Situations in everyday life
- Recognize when biological knowledge is relevant to a problem
- Recognize when a scientific approach is relevant to a problem
- Select and apply appropriate biological knowledge and skills to clarify and help produce solutions to problems, especially the personal and social problems of everyday life to
- Which such knowledge and skills can apply
- Use thoughtful, rational strategies for decision-making in those everyday situations to which both biological knowledge and value positions are relevant.

**Respect for Evidence, Rationality and Intellectual Honesty:**

- Given the number of emotive issues in the area of biology, students should display
- Respect for evidence, rationality and intellectual honesty.

**Capacities to Communicate:**

Students should:

- Comprehend the intention of a scientific communication, the relationships between its
- Parts and its relationship to what they already know
- Select the relevant parts from a communication
- Translate information from communications in particular modes (e.g. Spoken word, written Word, tables, graphs, flow sheets, diagrams) to other modes
- Structure information and use appropriate modes (including the spoken word, writing And diagrams) to communicate it.

**Ability to work with Others:**

Students should participate in group work in such a way that he or she:

- Shares the responsibility for achieving a group task
- shows concern for the fullest possible participation of each group member.

**ZIAUDDIN UNIVERSITY EXAMINATION BORD**  
**SLOs CATEGORIZATION**  
**XI-Biology**  
**Detailed Syllabus**

S. No	Chapter Name	Topics /Items	Student Learning Outcomes	K	U	A
1.	<b>Biological Molecules</b>	<ul style="list-style-type: none"> <li>Biological Molecules</li> <li>Importance of Water</li> <li>Carbohydrates</li> <li>Proteins</li> <li>Lipids</li> <li>Nucleic acids</li> <li>Conjugated Molecules</li> </ul>	<ul style="list-style-type: none"> <li>Introduce biochemistry and describe the approximate chemical composition of protoplasm.</li> <li>Describe biologically important properties of water (Polarity, hydrolysis, specific heat, water as solvent and reagent, density, cohesion/ionization)</li> <li>Define carbohydrates and classify them.</li> <li>Distinguish the properties and roles of monosaccharide's, Oligosaccharides, Polysaccharides.</li> <li>Define Proteins: Amino acids, structure of proteins also Classify proteins as globular and fibrous proteins.</li> <li>Define lipids and describe the properties and roles of acylglycerols, phospholipids, terpenoids and waxes.</li> <li>Describe the structure along its back bone composition and function of DNA as hereditary material, double helical model.</li> <li>Explain general structure of RNA with its types.</li> <li>Introduce and discuss conjugated molecules</li> </ul>	★		
2.	<b>Enzymes</b>	<ul style="list-style-type: none"> <li>Introduction/Charact eristics of enzymes</li> <li>Mechanism of action of enzymes</li> <li>Factors effecting rate of enzyme action</li> <li>Enzyme inhibition</li> <li>Enzymes classification</li> </ul>	<ul style="list-style-type: none"> <li>Describe the structure of enzyme.</li> <li>Explain mechanism of action of enzymes through induce fit model and lock and key model</li> <li>Describe effects of factor on enzyme action (temperature, pH, concentration)</li> <li>Distinguish enzyme inhibitors</li> <li>Classify enzymes on the basis of the reactions catalyzed and on the basis of the substrates they use (lipases, diastase, amylase,</li> </ul>		★	
3.	<b>Cell structure &amp; Function</b>	<ul style="list-style-type: none"> <li>Techniques used in Cell Biology</li> <li>Cell Wall and Plasma</li> </ul>	<ul style="list-style-type: none"> <li>List the principles and identify the apparatus used in the techniques of fractionation,</li> </ul>	★		★

		<ul style="list-style-type: none"> <li>Membrane - The Boundary Wall</li> <li>Cytoplasm and Organelles</li> <li>Prokaryotic and Eukaryotic Cells</li> </ul>	<ul style="list-style-type: none"> <li>differential staining, centrifugation, micro dissection, tissue culture, chromatography, electrophoresis and spectrophotometry</li> <li>Explain the chemical composition of plasma membrane. • Explain the fluid mosaic model of plasma membrane and its role in translocation of substances.</li> <li>Outline the structure and function of the following organelles: Nucleus, Endoplasmic reticulum, Golgi apparatus, Mitochondria</li> <li>Describe the formation, structure and functions of the lysosomes with its storage diseases.</li> <li>Compare and contrast the structure of Prokaryotic cell with Eukaryotic cells</li> <li>Discuss fluid mosaic model of cell membrane</li> </ul>	★	★	★
4.	<b>Bioenergetics</b>	<ul style="list-style-type: none"> <li>Photosynthesis</li> <li>Cellular Respiration</li> <li>Photorespiration</li> </ul>	<ul style="list-style-type: none"> <li>Explain the process of Photosynthesis</li> <li>Distinguish the role of factors (light, water, CO<sub>2</sub>) effecting photosynthesis.</li> <li>Distinguish and explain light dependent and independent phases/reaction.</li> <li>Explain ATP production process</li> <li>Discuss Electron transport chain, phosphorylation, Glycolysis, Aerobic and Anaerobic respiration.</li> <li>Describe the events of non-cyclic photophosphorylation and outline the cyclic photophosphorylation.</li> <li>Explain the Calvin cycle (the regeneration of RuBP should be understood in outline only).</li> <li>Explain the process of anaerobic respiration in terms of glycolysis and conversion of pyruvate into lactic acid or ethanol.</li> <li>Outline the process of C<sub>4</sub> and CAM photosynthesis as an adaptation evolved in some plants to deal with the problem of photorespiration</li> </ul>	★	★	★
5.	<b>Acellular life</b>	<ul style="list-style-type: none"> <li>Viruses - Discovery and Structure</li> <li>Parasitic Nature of Viruses</li> <li>Life cycle of Bacteriophage</li> <li>Life cycle of Human Immunodeficiency</li> </ul>	<ul style="list-style-type: none"> <li>Trace the discovery of virus</li> <li>Classify viruses on basis of their structure/ no. of strands/diseases/host etc.</li> <li>Justify the status of viruses among living and non-living things.</li> <li>Describe the Lytic and Lysogenic life cycles of a virus.</li> <li>Outline the usage of bacteriophage in</li> </ul>	★	★	★



		<ul style="list-style-type: none"> <li>• Viral Diseases</li> <li>• Prions and Viroids</li> </ul>	<ul style="list-style-type: none"> <li>• genetic engineering.</li> <li>• Identify symptoms, mode of transmission and causes of viral disease (AIDS)</li> <li>• Describe the causative agent, symptoms, treatment and prevention of the following viral diseases: hepatitis, herpes, polio and leaf curl virus disease of cotton.</li> <li>• Describe the structure of prions and viroids.</li> </ul>			
6.	<b>Prokaryotes</b>	<ul style="list-style-type: none"> <li>• Taxonomy of Prokaryotes</li> <li>• Archaea</li> <li>• Bacteria; Ecology and Diversity</li> <li>• Structure; Shape and Size of Bacteria</li> <li>• Modes of Nutrition in Bacteria</li> <li>• Growth and Reproduction in Bacteria</li> <li>• Importance of Bacteria</li> <li>• Control of Harmful Bacteria</li> </ul>	<ul style="list-style-type: none"> <li>• Outline the taxonomic position of prokaryotes &amp; phylogenetic position of prokaryotes.</li> <li>• List the unifying archaeal features that distinguish them from bacteria.</li> <li>• Describe cellular structures of bacteria</li> <li>• Explain diversity in shape, size and types Of in bacteria</li> <li>• Highlight the importance of bacteria and control of harmful bacteria</li> <li>• Define growth, reproduction and genetic engineering in bacteria.</li> <li>• List the chemical and physical methods used to control harmful bacteria.</li> </ul>	★	★	★
7.	<b>Protoctista &amp; Fungi</b>	<ul style="list-style-type: none"> <li>• Protoctista - The Evolutionary Relationships</li> <li>• Major groups of Protoctista.</li> <li>• General characteristics of Fungi</li> <li>• Diversity among Fungi</li> <li>• Importance of Fungi</li> </ul>	<ul style="list-style-type: none"> <li>• Explain protists as a diverse group of eukaryotes that has polyphyletic origin and defined</li> <li>• Differentiate among major group of protists with examples</li> <li>• List the characteristic features of fungi and characteristics that distinguish fungi from other kingdoms and give reasons why fungi are classified in a separate kingdom.</li> <li>• Demonstrate Reproduction in fungi (life cycle of Ulva, Rhizopus and slime mold</li> <li>• Define Animal like Protoctista and its classification</li> </ul>	★	★	★
8.	<b>Diversity among plants</b>	<ul style="list-style-type: none"> <li>• Evolutionary Relations in Plants</li> <li>• Non-Vascular Plants</li> <li>• Seedless Vascular Plants</li> <li>• Seed Plants</li> </ul>	<ul style="list-style-type: none"> <li>• Outline and introduce the structure of plants</li> <li>• List general characteristics/features of plants</li> <li>• Describe the general characteristics of bryophytes.</li> <li>• Draw the life cycle of moss</li> <li>• Describe the general characteristics of vascular plants.</li> <li>• List the characters of seedless vascular plants with examples of whisk ferns, club mosses, horsetails and ferns.</li> <li>• Define angiosperms and explain the</li> </ul>	★	★	★

			<ul style="list-style-type: none"> <li>difference between monocots and dicots.</li> <li>Explain the life cycle of a flowering plant</li> </ul>	★	★	
9.	<b>Diversity among animals</b>	<ul style="list-style-type: none"> <li>Characteristics of Animals</li> <li>Criteria for Animal Classification</li> <li>Invertebrates</li> <li>Chordates</li> </ul>	<ul style="list-style-type: none"> <li>Describe general characteristic of animals</li> <li>Classify animals on the basis of presence and absence of tissues/ tissue layer/symmetry and coelom (protostomes &amp; deuterostomes.)</li> <li>Differentiate the diploblastic and triploblastic levels of organization.</li> <li>Describe the general characteristics, importance and examples of sponges, cnidarians, platyhelminths, aschelminths (nematodes), mollusks, annelids, arthropods and echinoderms.</li> <li>Describe the characteristics of invertebrate chordates and vertebrates.</li> <li>List the characteristics of fishes (jawless, cartilaginous and bony Fishes), amphibians, reptiles, birds and mammals.</li> <li>Differentiate among monotremes, marsupials, and placentals.</li> </ul>	★	★	★
10.	<b>Form and functions of plants</b>	<ul style="list-style-type: none"> <li>Nutrition in Plants</li> <li>Gaseous Exchange in Plants</li> <li>Transport in Plants</li> <li>Homeostasis in Plants</li> <li>Support in Plants</li> <li>Growth and Development in Plants</li> <li>Growth Responses in Plants</li> </ul>	<ul style="list-style-type: none"> <li>List the macro and micronutrients of plants highlighting the role of each nutrient.</li> <li>State the examples of carnivorous plant</li> <li>Explain the exchange of gases in plants.</li> <li>Describe the structure of xylem and phloem, vessel elements, sieve tube elements, companion cells, tracheid's and relate their structures with functions.</li> <li>Explain the movement of in terms of water potential, in terms of symplast, apoplast and vacuolar pathways. And through Transpiration, Adhesion, Cohesion and Tension mechanism.</li> <li>Describe the mechanisms involved in the opening and closing of stomata.</li> <li>Explain movement of water into or out of cell in isotonic, hypotonic, and hypertonic conditions.</li> <li>Define Homeostasis in plants and describe osmotic adjustments in hydrophytic (marine and freshwater), xerophytic and Mesophytes and halophyte plants.</li> <li>Explain the turgor pressure &amp; describe the structure of supporting tissues in plants</li> <li>Describe the role of apical meristem and lateral meristem in primary and secondary</li> </ul>	★	★	★

			<p>growth. Explain how annual rings are formed.</p> <ul style="list-style-type: none"> <li>• Explain the role of phytohormones</li> <li>• Explain the types of movement.</li> <li>• Define photoperiodism and vernalization</li> <li>• Classify plants on the basis of photoperiodism and give examples.</li> </ul>	★	★	★
11.	<b>Holozoic Nutrition</b>		<ul style="list-style-type: none"> <li>• Explain the steps of Holozoic Nutrition; Indigestion, digestion, absorption, assimilation of egestion.</li> <li>• Demonstrate Intracellular and extracellular digestion.</li> <li>• Describe Digestion in Amoeba, Planaria.</li> <li>• Define the mechanical and chemical digestion in oral cavity and swallowing and peristalsis.</li> <li>• Describe the major actions carried out on food in the three regions of the small intestine.</li> <li>• Describe the component parts of large intestine with their respective roles.</li> <li>• Correlate the involuntary reflex for egestion in infants and the voluntary control in adults.</li> <li>• Explain the storage and metabolic role of liver, composition of bile, structure of pancreas and explain its function as an exocrine gland.</li> <li>• Describe the causes, prevention, and treatment of the following disorders; ulcer, food poisoning, dyspepsia, obesity, bulimia nervosa and anorexia nervosa</li> </ul>	★	★	★
12.	<b>Circulation</b>	<ul style="list-style-type: none"> <li>• Circulation</li> <li>• Blood Circulatory System of Man</li> <li>• Heart</li> <li>• Blood Vessels</li> <li>• Blood Pressure and its Measurement</li> <li>• Cardiovascular Disorders</li> <li>• Lymphatic System of Man</li> </ul>	<ul style="list-style-type: none"> <li>• Explain the need of circulation.</li> <li>• Define the types of circulation in animals.</li> <li>• Explain the components of circulatory systems.</li> <li>• State the location of heart in the body and define the role of pericardium, structure of the walls of heart and the flow of blood through heart as regulated by the valves.</li> <li>• State the phases of heartbeat. Role of SA node, AV node and Purkinji fibers in controlling the heartbeat.</li> <li>• List the principles &amp; uses of Electrocardiogram.</li> <li>• Describe the detailed structure of arteries, veins and capillaries also describe the role of</li> </ul>	★	★	★

			<p>arterioles in vasoconstriction and vasodilation.</p> <ul style="list-style-type: none"> <li>Trace the path of the blood through the pulmonary and systemic circulation</li> <li>Define blood pressure and explain its periods of systolic and diastolic pressure.</li> <li>State the role of baroreceptors and volume receptors in regulating the blood pressure.</li> <li>Define the term thrombus and differentiate between thrombus and embolus.</li> <li>Identify the factors causing atherosclerosis and arteriosclerosis, Angina pectoris, heart attack, and heart failure as the stages of cardiovascular disease development.</li> <li>Describe the principles of angiography and coronary bypass, angioplasty and open-heart surgery.</li> <li>Define hypertension and describe the factors that regulate blood pressure.</li> <li>List the changes in life styles that can protect man from hypertension and cardiac problems.</li> <li>Compare the composition of intercellular fluid with that of lymph.</li> <li>State the structure and role of lymph capillaries, lymph vessels and lymph trunks.</li> </ul>	★	★	★
13.	<b>Immunity</b>	<ul style="list-style-type: none"> <li>First Line of Defense (Skin, Digestive Tract, Air Passageway)</li> <li>Second Line of Defense - The Nonspecific Defenses</li> <li>Third Line of Defense - The Specific Defenses</li> </ul>	<ul style="list-style-type: none"> <li>Describe the structural features of human skin that make it impenetrable barrier against invasion by microbes.</li> <li>Explain how oil and sweat glands within the epidermis inhibit the growth and also Kill microorganisms.</li> <li>Recognize the role of the acids and enzymes of the digestive tract in killing the bacteria present in food.</li> <li>2- Second Line of Defense (The Nonspecific Defenses</li> <li>Describe the role of macrophages and neutrophils in killing bacteria.</li> <li>Explain how the Natural Killer (NK) cells kill the cells that are infected by microbes and also kill cancer cells.</li> <li>State how the proteins of the complement system kill bacteria.</li> <li>State the events of the inflammatory response as one of the most generalized nonspecific defenses.</li> </ul>	★	★	★

			<ul style="list-style-type: none"> <li>List the ways the fever kills microbes</li> <li>Identify how the immune system recognizes self and non-self-cells/tissues.</li> <li>Identify monocytes, T-cells and B-cells as the components of the immune system.</li> <li>State the two basic types of immunity. And</li> <li>Differentiate the two types of acquired immunity (active and passive immunity).</li> <li>Identify the process of vaccination as a means to develop active acquired immunity.</li> <li>Draw the structural model of an antibody molecule.</li> <li>Define allergies and correlate the symptoms of allergies with the release of histamines.</li> <li>Describe the autoimmune diseases.</li> <li>Describe malignant melanoma as due to the inability of tumor-infiltrating lymphocyte (TIL) to control the tumors of skin cancer.</li> <li>Demonstrate the discovery of monoclonal antibodies</li> </ul>	★	★	★
14.	<b>Gaseous Exchange</b>	<ul style="list-style-type: none"> <li>Respiration and Respiratory System of Man</li> <li>Mechanism of Transport of Gases</li> <li>Respiratory Disorders</li> </ul>	<ul style="list-style-type: none"> <li>Define respiration and correlate the gaseous exchange with ventilation</li> <li>Describe the main structural features and functions of the components of human respiratory system.</li> <li>Describe the ventilation mechanism in humans.</li> <li>Explain how breathing is controlled.</li> <li>Describe the transport of oxygen and carbon dioxide through blood.</li> <li>Describe the role of respiratory pigments.</li> <li>State the causes, symptoms and treatment of upper Respiratory Tract and lower Respiratory Tract Infections and disorders of lungs (emphysema and lung cancer).</li> <li>List the effects of smoking on respiratory system.</li> </ul>	★	★	★

# Ziauddin University Examination Board

## Grade XI-Biology

### Table of Specification (TOS)

S/ No	Section	Chapters	Number of Items (Sub-topics)	Weightage	Distribution of marks	MCQs (1 mark each)	CRQs (4 mark each)	ERQs (8 mark each)
1	<b>Cell biology</b>	<b>Biological Molecules</b>	7	27%	23 marks	1 (1 mark)	1 (4 marks)	1 (8 marks)
2		<b>Enzymes</b>	5			1 (1 mark)	<b>OR</b> 1 (4 marks)	<b>OR</b>
3		<b>Cell structure &amp; function</b>	4			2 (2 mark)	1 (4 marks)	
4		<b>Bioenergetics</b>	3			2 (2 mark)	<b>OR</b> 1 (4 marks)	1 (8 marks)
5	<b>Biodiversity</b>	<b>Acellular life</b>	6	38%	32 marks	1 (1 mark)	1 (4 marks)	1 (8 marks)
6		<b>Prokaryotes</b>	8			1 (1 mark)	<b>OR</b> 1 (4 marks)	<b>OR</b>
7		<b>Protocista &amp; Fungai</b>	5			1 (1 mark)	1 (4 marks)	
8		<b>Diversity among plants</b>	4			1 (1 mark)	1 (4 marks)	1 (8 marks)
9		<b>Diversity among animals</b>	4			1 (1 mark)	<b>OR</b> 1 (4 marks)	<b>OR</b> 1 (8 marks)
10	<b>Life process</b>	<b>Forms and functions in plant</b>	7	35%	30 marks	1 (1 mark)	1 (4 marks)	1 (8 marks)
11		<b>Holozoic Nutrition</b>	5			1 (1 mark)	1 (4 marks)	
12		<b>Circulation</b>	7			2 (2 mark)		1 (8 marks)
13		<b>Immunity</b>	3			1 (1 mark)	1 (4 marks)	
14		<b>Gaseous exchange</b>	3			1 (1 mark)	<b>OR</b> 1 (4 marks)	
	<b>03</b>	<b>14</b>	<b>71</b>	<b>100</b>	<b>85 marks</b>	<b>17 MCQs</b>	<b>15</b>	<b>8</b>
	<b>Required with choices</b>					<b>85 marks paper (Theory)</b>	<b>questions required</b>	<b>questions required</b>

**Ziauddin University Examination Board**  
**Grade XI**  
**Biology**  
**Scheme of assessment**

**Maximum marks: 85**  
**Biology (Combine botany & Zoology)**

**Section “A” (Multiple Choice questions)**

**Multiple choice questions (MCQs)** **(1 x 17 = 17)**

- Attempt 17 MCQs: Each carries equal marks

**Section “B” (Constructed Response questions)**

**Constructed Response questions (CRQs)** **(9 x 4 =36)**

- **Reasoning Questions**  
Attempt any 4 reasoning out of 7. Each carries equal marks
- **Non-Reasoning questions**  
Attempt any 5 out of 8 questions. Each carries equal marks

**Section “C” (Extended Response Questions)**

**Extended response questions (ERQs)** **(8 x 4 = 32)**

- Attempt any 2 questions with its both sub parts (a and b) out of three questions
- Each consist of eight (08) marks

## DEFINITIONS OF COGNITIVE LEVELS

### Remember

Remembering is the act of retrieving knowledge and can be used to produce things like definitions or lists. The student must be able to recall or recognise information and concepts. The teacher must present information about a subject to the student, ask questions that require the student to recall that information and provide written or verbal assessment that can be answered by remembering the information learnt.

#### Question Stems

- Can you name all the ...?
- Describe what happens when ...?
- How is (are) ...?
- How would you define ...?
- How would you identify ...?
- How would you outline ...?
- How would you recognise...?
- List the ... in order.
- What do you remember about ...?
- What does it mean?
- What happened after?
- What is (are) ...?
- What is the best one?
- What would you choose ...?
- When did ...?
- Where is (are) ...?
- Which one ...?
- Who spoke to ...?
- Who was ...?
- Why did ...?

### Understand

The next level in the taxonomic structure is Understanding, which is defined as the construction of meaning and relationships. Here the student must understand the main idea of material heard, viewed, or read and interpret or summarise the ideas in their own words. The teacher must ask questions that the student can answer in their own words by identifying the main idea.

#### Question Stems

- Can you clarify...?
- Can you illustrate ...?
- Condense this paragraph.
- Contrast ...
- Does everyone think in the way that ... does?
- Elaborate on ...
- Explain why ...
- Give an example
- How can you describe
- How would you clarify the meaning
- How would you compare ...?
- How would you differentiate between ...?
- How would you describe...?
- How would you generalise...?
- How would you identify ...?
- Is it valid that ...?
- Is this the same as ...?
- Outline ...
- Select the best definition
- State in your own words
- This represents ...
- What are they saying?
- What can you infer from ...?
- What can you say about ...?
- What could have happened next?
- What did you observe?



	<ul style="list-style-type: none"> <li>• What does this mean?</li> <li>• What expectations are there?</li> <li>• What information can you infer from...?</li> <li>• What is the main idea of ...?</li> <li>• What restrictions would you add?</li> <li>• What seems likely?</li> <li>• What seems to be ...?</li> <li>• What would happen if ...?</li> <li>• What would happen if ...?</li> <li>• Which are the facts?</li> <li>• Which statements support ...?</li> </ul>
<p><b>Apply</b></p> <p>The third level in Bloom’s taxonomy, Applying, marks a fundamental shift from the pre-Bloom’s learning era because it involves remembering what has been learnt, having a good understanding of the knowledge, and applying it to real-world exercises, challenges or situations. Students must apply an abstract idea in a concrete case to solve a problem or relate it to prior experience. The teacher must provide opportunities for students to use theories and problem-solving techniques in new situations and review and check their work. Assessment questions should be provided that allow students to define and solve problems.</p> <p><b>Question Stems</b></p> <ul style="list-style-type: none"> <li>• Can you group by characteristics such as ...?</li> <li>• Choose the best statements that apply</li> <li>• Clarify why ...</li> <li>• Do you know of another instance where ...?</li> <li>• Draw a story map</li> <li>• Explain why a character acted in the way that he did</li> <li>• From the information given, can you develop a set of instructions about ...?</li> <li>• How could you develop ...?</li> <li>• How would you change ...?</li> <li>• How would you demonstrate...?</li> <li>• How would you develop ... to present ?</li> <li>• How would you explain ...?</li> </ul>	<p><b>Analyse</b></p> <p>Analysing is the cognitive level where students can take the knowledge they have remembered, understood and applied, then delve into that knowledge to make associations, discernments or comparisons. Students should break down a concept or idea into parts and show relationships between these parts. Teachers must give students time to examine concepts and their requisite elements. Students are required to explain why they chose a solution.</p> <p><b>Question Stems</b></p> <ul style="list-style-type: none"> <li>• Can you distinguish between ...?</li> <li>• Can you explain what must have happened when ...?</li> <li>• Determine the point of view, bias, values, or intent underlying the presented material</li> <li>• Discuss the pros and cons of ...</li> <li>• How can you classify ... according to ...?</li> <li>• How can you compare the different parts?</li> <li>• How can you sort the different parts...?</li> <li>• How is ... connected to ...?</li> <li>• How is ... similar to ...?</li> <li>• How would you categorise...?</li> <li>• How would you explain ?</li> <li>• If ... happened, what might the ending have been?</li> <li>• State the point of view of ...</li> <li>• What are some of the problems of ...?</li> </ul>

- How would you modify ...?
- How would you present...?
- How would you solve ... ?
- Identify the results of ...
- Illustrate the ...
- Judge the effects of ... What would result ...?
- Predict what would happen if ...
- Tell how much change there would be if ...
- Tell what would happen if ...
- What actions would you take to perform ...?
- What do you think could have happened next?
- What examples can you find that ?
- What other way would you choose to ...?
- What questions would you ask of ...?
- What was the main idea ...?
- What would the result be if ...?
- Which factors would you change if ...?
- Who do you think...?
- Why does this work?
- Write a brief outline ...
- Write in your own words ...

- What assumptions ...?
- What can you infer about...?
- What can you point out about ?
- What conclusions ...?
- What do you see as other possible outcomes?
- What does the author assume?
- What explanation do you have for ...?
- What ideas justify the conclusion?
- What ideas validate...?
- What is the analysis of ...?
- What is the function of ...?
- What is the problem with ...?
- What motive is there?
- What persuasive technique is used?
- What statement is relevant?
- What was the turning point?
- What were some of the motives behind ...?
- What's fact? Opinion?
- What's the main idea?
- What's the relationship between?
- Which events could not have happened?
- Why did ... changes occur?
- Why do you think ?

## BLOOMS TAXONOMY WITH EXAMPLES

### Conclusion

If you are a teacher looking for ways to engage your students in learning, this LIST of questions might be interesting for your classroom practice. Bloom's Taxonomy question stems can help elicit higher-order thinking skills and promote critical thinking among learners at different taxonomy levels. These question stems can also encourage students to think about their knowledge through reflection before answering questions.

### ACTION WORDS FOR COGNITIVE LEVELS

<b>Knowledge</b>	<b>Understand</b>	<b>Apply</b>	<b>Analyze</b>	<b>Evaluate</b>	<b>Create</b>
	 <small>UNDERSTAND</small>				
define	explain	solve	analyze	reframe	design
identify	describe	apply	appraise	criticize	compose
describe	interpret	illustrate	judge	evaluate	create
label	paraphrase	modify	support	order	plan
list	summarize	use	compare	compare	combine
name	classify	calculate	decide	classify	formulate
state	compare	change	discriminate	contrast	invent
match	differentiate	choose	recommend	distinguish	hypothesize
recognize	discuss	demonstrate	summarize	infer	substitute
select	distinguish	discover	assess	separate	write
examine	extend	experiment	choose	explain	compile
locate	predict	relate	convince	select	construct
memorize	associate	show	defend	categorize	develop
quote	contrast	sketch	estimate	connect	generalize
recall	convert	complete	grade	differentiate	integrate
reproduce	demonstrate	construct	measure	divide	modify
tabulate	estimate	dramatize	predict	order	organize
tell	express	interpret	rank	prioritize	prepare
Copy	identify	manipulate	score	survey	produce
discover	indicate	paint	select	calculate	rearrange

duplicate	infer	prepare	test	conclude	rewrite
enumerate	relate	teach	argue	correlate	adapt
listen	restate	act	conclude	deduce	anticipate
observe	select	collect	consider	devise	arrange
omit	translate	compute	critique	diagram	assemble
read	ask	explain	debate	dissect	choose
recite	cite	list	distinguish	estimate	collaborate
record	discover	operate	editorialize	evaluate	facilitate
repeat	generalize	practice	justify	experiment	imagine
retell	group	simulate	persuade	focus	intervene
visualize	illustrate	transfer	rate	illustrate	make
	judge	write	weigh	organize	manage
	observe			outline	originate
	order			plan	propose
	report			question	simulate
	represent			test	solve
	research				support
	review				test
	rewrite				validate
	show				



**MODEL PAPER 2023**

SUBJECT: BIOLOGY

GRADE: XI

MAX. MARKS: 85

TIME: 3 HOURS

**SECTION 'A' (COMPULSORY) MULTIPLE CHOICE QUESTIONS (MCQ'S)**

Time: 30 minutes

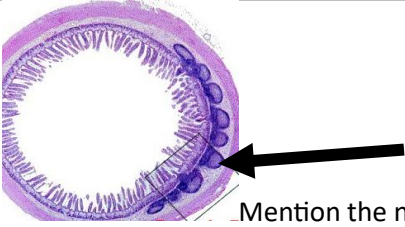
Marks: 17

Note: (i). Attempt all Questions from this section.

(ii) Shade ONE letter for each question. Make sure you put your answer in line with the correct question number.

(iii). Write the code of your question paper in bold letters in the beginning of the answer script.

**1. Choose the correct answer for each from the given options:**

<b>1. Which structure is common in plant and animal cells?</b>	a) Chloroplast	b) Mitochondria	c) Cell wall	d) Central vacuole
<b>2. All amino acids have same formula except</b>	a) Alpha carbon	b) Radical Group	c) Hydroxyl group	d) Amino group
<b>3. Pyruvic acid is the end product of</b>	a) Kreb's cycle	b) Glycolysis	c) Anaerobic respiration	d) Photosynthesis
<b>4. Average blood pressure is lowest in which structure</b>	a) Aorta	b) Arterioles	c) capillaries	d) Vena cave
<b>5. The specificity of the enzyme is due to:</b>	a) Surface configuration	b) pH sensitivity	c) High molecular weight	d) Hydrogen bonding
<b>6. It is not a part of gastric juice</b>	a) Pepsin	b) HCl	c) Mucus	d) Amylase
<b>7. These organelles are center of aerobic respiration in plant and animal's cell.</b>	a) Chloroplast	b) Nucleus	c) lysosomes	d) mitochondria
<b>8.</b>	 <p>Mention the name of these specific structures present in small intestine.</p>			

	a) Tonsils	b) Appendix	c) Payer's patches	d) Mucosa
<b>9.</b>	<b>When the tuft of flagella is present at both the ends in the structure of bacterial cell, then the condition is known as_____.</b>			
	a) Monotrichous	b) Lophotrichous	c) Amphitrichous	d) Atrichous
<b>10.</b>	<b>The portal system is one that begins and end in</b>			
	a) Arteries	b) Veins	c) Capillaries	d) Heart
<b>11.</b>	<b>The first step in the life cycle of HIV virus is</b>			
	a) Fusion	b) Attachment	c) Integration	d) Transcription
<b>12.</b>	<b>Plant oxidizes sugar in chloroplast during day time without production of energy called</b>			
	a) C3 Cycle	b) C4 cycle	c) Photorespiration	d) Photophosphorylation
<b>13.</b>	<b>Ulva is commonly called</b>			
	a) Mushroom	b) Bacteria	c) Fungi	d) Sea lettuce
<b>14.</b>	<b>The maximum volume of air contained in the lungs by a full forced inhalation is called</b>			
	a) Tidal volume	b) Vital capacity	c) Ventilation rate	d) Total lungs capacity
<b>15.</b>	<b>It is pseudo coelomate organism</b>			
	a) Tape worm	b) Jelly fish	c) Ascaris	d) Earth worm
<b>16.</b>	<b>In the structure of ovule, the opening through which pollen tube enters is called</b>			
	a) Micropyle	b) Microspore	c) Antipodal cell	d) Embryo sac
<b>17.</b>	<b>Indole Acetic Acid is another name of which phytohormone?</b>			
	a) Cytokinin	b) Ethylene	c) Abscisic acid	d) Auxin



**MODEL PAPER 2023**

SUBJECT: BIOLOGY

GRADE: XI

MAX. MARKS: 85

TIME: 3 HOURS

Time: 2 ½ hrs.

Marks: 68

**SECTION 'B' CONSTRUCTED RESPONSE QUESTIONS (CRQ'S) (9x4=36)**

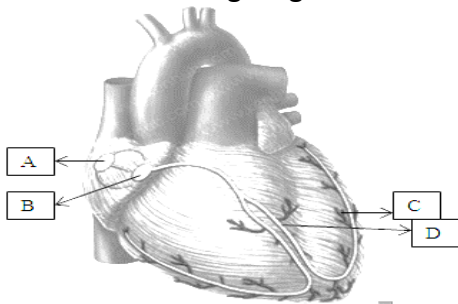
Note: Answer any FOUR (04) questions from Reasoning questions and any FIVE (05) questions from non-reasoning questions. All questions carry equal marks.

**Q2.a) REASONING QUESTIONS:**

- I. Why water molecules are amphoteric in nature?
- II. Write classification of enzymes on the bases of substrate
- III. Why lysosomes are suicidal sacs and how they do the process of autophagy
- IV. Why photosynthesis is called redox process?
- V. Write classification of virus on the bases of host cell.
- VI. Why bacteria called recycling agent in nature?
- VII. Why diploblastic animals are different from triploblastic animals?

**Q2.b) NON-REASONING QUESTIONS:**

- I. Differentiate between anyone:  
Transcription and Translation  
Viroid's and Prions
- II. Write characteristics of enzymes
- III. Define this term: Mycology, Hyphae, Lichen and Mycelium.
- IV. Define growth in bacteria with its phases
- V. Define cartilaginous and bony fishes
- VI. Define why blood flow faster in arteries?
- VII. Outline harmful effects of fever.
- VIII. Label the following diagram:



**SECTION 'C' EXTENDED RESPONSE QUESTIONS (ERQ'S) (16x2=32)**

**Note: Answer any TWO (02) questions from this section. All questions carry equal marks.**

**Q3.** (a) What are conjugated molecules? Explain types of it? OR What are phytohormones? Define their functions in detail

(b) Describe in detail the process of Glycolysis or Krab's cycle.

**Q4.** (a) Explain lytic cycle of bacteriophage virus with diagram **OR** discuss structural feature of antibody. How it's helpful for getting rid of pathogenic organisms

(b) Define life cycle of Ulva with diagram.

**Q5.** (a) Describe life cycle of moss with diagram **OR** What do you know about phases of heart beat in man

(b) Write down the general characters of phylum Annelida **OR** Mollusca



**HSC PART I EXAMINATION  
MARKS BREAKUP GRID FOR EXAMINATION 2023**

**GROUP: PRE-MEDICAL**

<b>SUBJECT</b>	<b>THEORY</b>	<b>PRACTICAL</b>	<b>TOTAL</b>
ENGLISH	100	-	100
URDU NORMAL / SINDHI NORMAL	100	-	100
ISLAMIC EDUCATION /CIVICS	50	-	50
PHYSICS	85	15	100
CHEMISTRY	85	15	100
BIOLOGY	85	15	100
<b>TOTAL</b>	<b>505</b>	<b>45</b>	<b>550</b>

**GROUP: PRE-ENGINEERING**

<b>SUBJECT</b>	<b>THEORY</b>	<b>PRACTICAL</b>	<b>TOTAL</b>
ENGLISH	100	-	100
URDU NORMAL / SINDHI NORMAL	100	-	100
ISLAMIC EDUCATION /CIVICS	50	-	50
PHYSICS	85	15	100
CHEMISTRY	85	15	100
MATHEMATICS	100	--	100
<b>TOTAL</b>	<b>520</b>	<b>30</b>	<b>550</b>

**GROUP: COMPUTER SCIENCE**

<b>SUBJECT</b>	<b>THEORY</b>	<b>PRACTICAL</b>	<b>TOTAL</b>
ENGLISH	100	-	100
URDU NORMAL / SINDHI NORMAL	100	-	100
ISLAMIC EDUCATION /CIVICS	50	-	50
PHYSICS	85	15	100
COMPUTER SCIENCE	75	25	100
MATHEMATICS	100	--	100
<b>TOTAL</b>	<b>510</b>	<b>40</b>	<b>550</b>

### **GROUP: COMMERCE (Private/Regular)**

<b>SUBJECT</b>	<b>THEORY</b>	<b>PRACTICAL</b>	<b>TOTAL</b>
ENGLISH	100	-	100
URDU NORMAL / SINDHI NORMAL	100	-	100
ISLAMIC EDUCATION /CIVICS	50	-	50
ECONOMICS	75	-	75
P.O.C	75	-	75
ACCOUNTING	100	--	100
BUSINESS MATHEMATICS	50		50
<b>TOTAL</b>	<b>550</b>	<b>---</b>	<b>550</b>

### **GROUP: HUMANITIES (Private/Regular)**

**(Any Three Elective)**

<b>SUBJECT</b>	<b>THEORY</b>	<b>PRACTICAL</b>	<b>TOTAL</b>
ENGLISH	100	-	100
URDU NORMAL / SINDHI NORMAL	100	-	100
ISLAMIC EDUCATION /CIVICS	50	-	50
COMPUTER STUDIES	75	25	100
ISLAMIC STUDIES	100		100
MATHEMATICS	100	-	100
SOCIOLOGY	100	--	100
ECONOMICS	100		100
EDUCATION	100		100
CIVICS	100		100
<b>TOTAL</b>	<b>550</b>	<b>---</b>	<b>550</b>



**Class: XI**

**Time Allowed: 20minutes**

**MODEL PAPER EXAMINATION 2024**

**SUBJECT: BIOLOGY**

**(SECTION "A")**

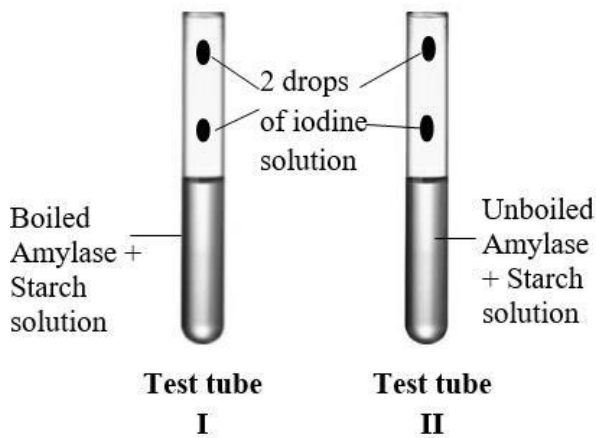
**Marks: 17**

**Note:** Attempt all questions from this section. Each question carries **ONE** mark.

1. In banana tree, flowers are covered over by one or many large brackets called:  
A. Spathes                      B. Capitulum                      C. Spadix                      D. Palea
2. Bacteriophages escape from host cell by the activity of:  
A. Ribozyme                      B. Lysozyme                      C. Peroxidase                      D. Reductase
3. Coenzyme Consist of:  
A. Protein                      B. Carbohydrates                      C. Lipid                      D. Vitamin
4. Enzyme of Human body are more active at:  
A. 40°C                      B. 37°C                      C. 37°F                      D. 35°C
5. Locomotory Organ in amoeba is  
A. Pseudopodia                      B. Cilia                      C. Flagella                      D. Myomeres
6. Most abundant Carbohydrate found un nature:  
A. Glucose                      B. Glycogen                      C. Cellulose                      D. Maltose
7. Induction of flowering in response to the relative length of day and night is known as:  
A. Photoperiodism                      B. Photorespiration                      C. Photophosphorylation                      D. Phototropism
8. The Hydrostatic Pressure in excess of atmospheric pressure is known as:  
A. Water Potential                      B. Osmotic Potential                      C. Pressure potential                      D. Solute Potential
9. Antibodies are produced by:  
A. T-Cells                      B. Macrophages                      C. B-Cells                      D. Neutrophils
10. RBCs are produced by:  
A. Bone Marrow                      B. Brain                      C. Kidney                      D. Heart
11. The Study of parasite is Called:  
A. Parasitology                      B. Ecology                      C. Cytology                      D. Immunology
12. Clarity of image is generally known as:  
A. Magnification                      B. Resocution                      C. Contrast                      D. Sedientation
13. The Liny air sacs present in human Lungs is called:  
A. Alvcoli                      B. Bronchus                      C. Bronchioles                      D. All of above
14. Our digestive tract consists of what kind of barriers?  
A. Physical Barriers                      B. Biochemical                      C. Both a and b                      D. None of these
15. It is not involved in antigen presentation:  
A. Macrophage                      B. Mucousmeunorane                      C. Neutrophil                      D. Dendritic cell
16. Which process involved in the flowering by cold temperature:  
A. Photoperiodism                      B. Transpiration                      C. Vernalization                      D. Secondary Growth
17. Anaerobic bacteria produce all chemical during respiration except:  
A. Ethanol                      B. Water.                      C. CO<sup>2</sup>                      D. Lactic Acid

**END OF SECTION A**

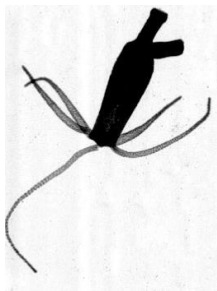
1. The given experimental setup is used to investigate the effect of boiled and unboiled amylase on starch solution and confirmation through iodine test.



The results (colour change) of both test tubes **I** and **II** would be

	<b>Test tube I</b>	<b>Test tube II</b>
A	blue-black	blue-black
B	blue-black	no colour change
C	no colour change	no colour change
D	no colour change	blue-black

2. Given is the diagram of an invertebrate specimen observed under the microscope.



The option that identifies the animal and its distinguishing feature is

	<b>Identification</b>	<b>Distinguishing Feature</b>
A	sycon	flagella
B	sycon	tentacles with stinging cells
C	hydra	flagella
D	hydra	tentacles with stinging cells

3. Given is the diagram of an invertebrate specimen.



The option that identifies the animal and its distinguishing feature is

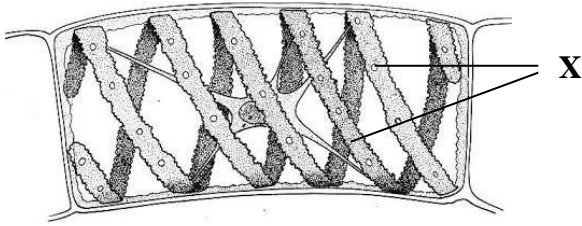
	Identification	Distinguishing Feature
A	roundworm	metameric segmentation
B	earthworm	metameric segmentation
C	roundworm	unsegmented
D	earthworm	unsegmented

4. In the process of Gram staining, the CORRECT sequence of steps used to stain bacteria is

fixation ↓ treatment with alcohol ↓ treatment with iodine ↓ staining by crystal violet ↓ staining by safranin	fixation ↓ staining by crystal violet ↓ treatment with iodine ↓ treatment with alcohol ↓ staining by safranin	fixation ↓ staining by safranin ↓ treatment with iodine ↓ staining by crystal violet ↓ treatment with alcohol	fixation ↓ staining by safranin ↓ staining by crystal violet ↓ treatment with iodine ↓ treatment with alcohol
A	B	C	D

5. In the Gram staining technique, when alcohol is applied on the bacterial smear, the smear will appear
- A. pink.
  - B. violet.
  - C. dark blue.
  - D. colourless.

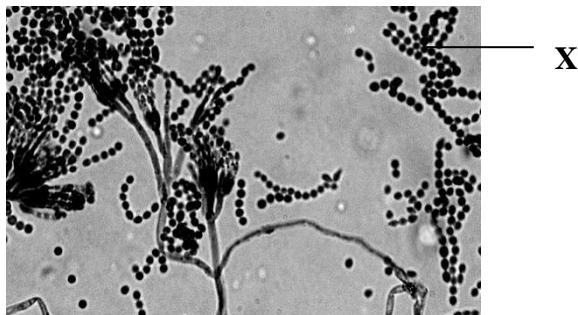
6. The given diagram shows a type of green alga.



The option that identifies the algal species and structure X is

	Algal Species	Structure X
A	spirogyra	cytoplasmic strand
B	nostoc	cytoplasmic strand
C	spirogyra	chloroplast
D	nostoc	chloroplast

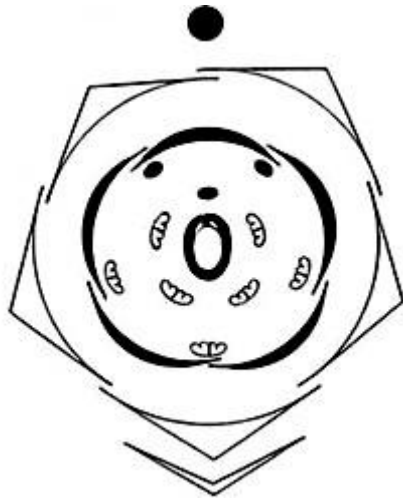
7. The given diagram shows a fungus under light microscope.



The option that identifies the fungus and structure X is

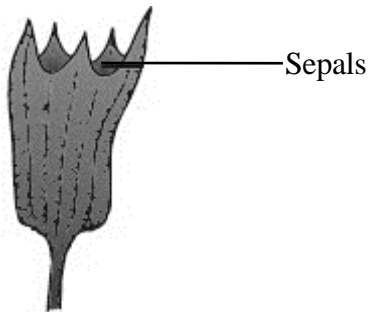
	Identification	Structure X
A	rhizopus	conidia
B	penicillium	sporangiohore
C	rhizopus	sporangiohore
D	penicillium	conidia

8. Given is the floral diagram of the flower *Cassia fistula*.



The arrangement of sepals and petals in the flower is

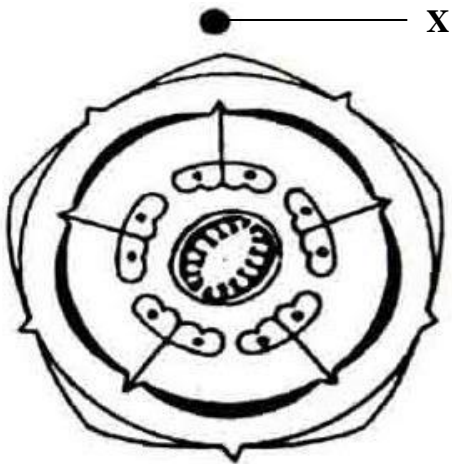
- A. valvate.
  - B. twisted.
  - C. vexillary.
  - D. imbricate.
9. The given diagram shows the calyx of a flower.



In the floral formula of the given diagram, the calyx will be represented as

- A. C5
- B. C(5)
- C. K5
- D. K(5)

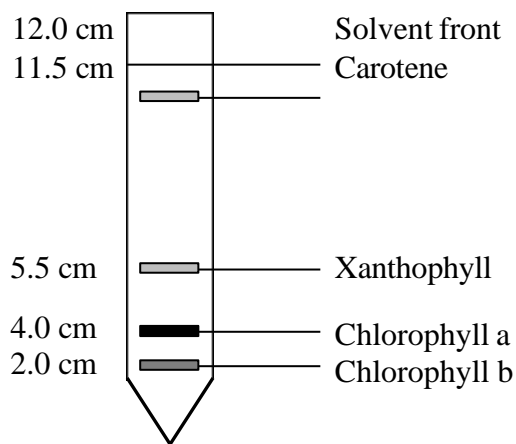
10. Given is the floral diagram of the flower *Datura alba*.



In the given diagram, X represents the position of the

- A. calyx with respect to the floral axis.
  - B. ovary with respect to the floral axis.
  - C. stamens with respect to the floral parts.
  - D. mother axis with respect to the floral parts.
11. The given diagram shows a paper chromatogram.

**Distance Migrated**



Based on the given information, the R<sub>f</sub> value for carotene is

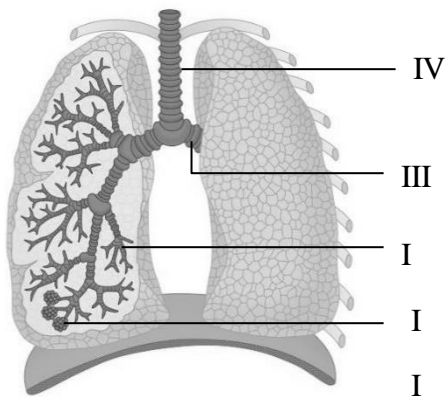
- A. 11.5
- B. 6.00
- C. 0.95
- D. 0.66



12. The option that identifies the mobile and stationary phase of paper chromatography is

	Mobile Phase	Stationary Phase
A	solvent	capillary tube
B	solvent	filter paper
C	pigment solution	capillary tube
D	pigment solution	filter paper

13. The given diagram shows the respiratory system of a mammal.



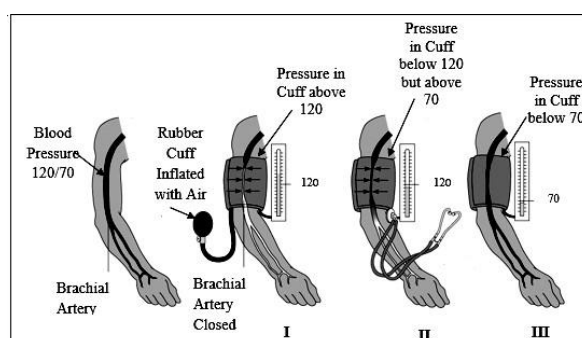
The structure where gases are exchanged is labelled as

- A. I.
- B. II.
- C. III.
- D. IV.

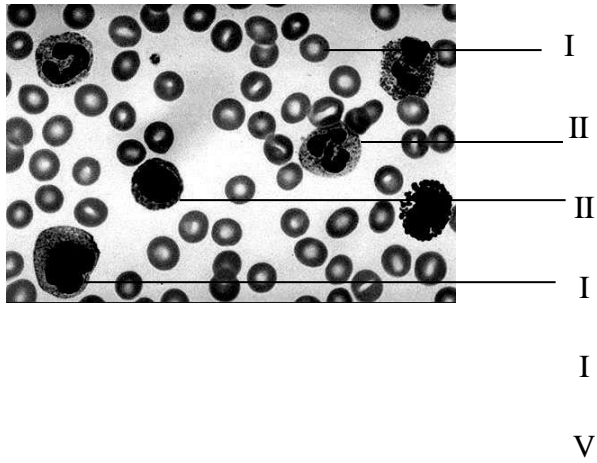
14. The given diagram shows different stages (I, II and III) of measuring blood pressure by using a sphygmomanometer.

When using a stethoscope, sound will be audible in stage(s)

- A. I only.
- B. II only.
- C. I and III.
- D. II and III.



15. The given diagram shows a microscopic view of a human blood sample.



The blood cell involved in antibody production is

- A. I.
- B. II.
- C. III.
- D. IV.



**Class: XI**

**MODEL PAPER EXAMINATION 2024**

**Time: 2 hours 40 minutes**    **SUBJECT: BIOLOGY (SECTION "B" AND SECTION "C")**

**Total Marks 68**

**Q2: SECTION "B" (SHORT ANSWER QUESTIONS)**

**36 Marks**

(a) Answer any

1. How monosaccharide are classified?
2. Why ATP is called energy currency?
3. Why sponges placed in animal kingdom, when it lacks tissue organization?
4. Why are lysosomes called suicidal sacs?
5. Why mineral nutrients are necessary for plants?
6. How enzyme activity effect on substrate concentration?
7. How CO<sub>2</sub> from cell transport to lungs?

(b) Non reasoning Question (any **FOUR**)

1. Define any two terms of the following:  
i. Mycelium    ii. enzymes    iii. Diffusion    iv. Transportation
2. what are the function of proteins ?
3. Differentiate between wbc and rbc.
4. Write a note on feedback inhibition?
5. Write the function of Golgi complex?
6. Differentiate between prokaryote and Eukaryotic cell.
7. Write a short note on Capillaries.

**SECTION "C" (DETAILED ANSWER QUESTIONS)**

**32 Marks**

**Note:** Attempt any two from this Section (16x2)

Q3 (a) Discuss the process of digestion in Stomach?

(b) State the phases of heartbeat in man?

Q4 Describe the floral characters and economic importance of family Rosaceae.

(b) Write the floral formula and draw the floral diagram of family Fabaceae.

**OR**

(b) Make a flow chart of C<sub>4</sub> cycle to avoid Photorespiration.

Q5 (a) Write about the general characteristics of phylum chordate OR phylum Annelida

(b) explain the structure and function of lysosome

**OR**

(b) Describe the properties and roles of starch, glycogen, cellulose and chitin.

**END OF PAPER**